



Big Rock Exploration AB

Exploration permits

Ingelshyttan

Uvberget

Rostberget

Östra Gyttorpsgruvorna

Copper and iron

Zinc and copper

Gold, silver, copper, zinc and lead

Lanthanum, cerium and neodymium



Ingelshyttan

Overview

Mining iron and copper until 1957

9,2% copper and 45% iron

Magnetic and VLF anomalies reach out
from the mine



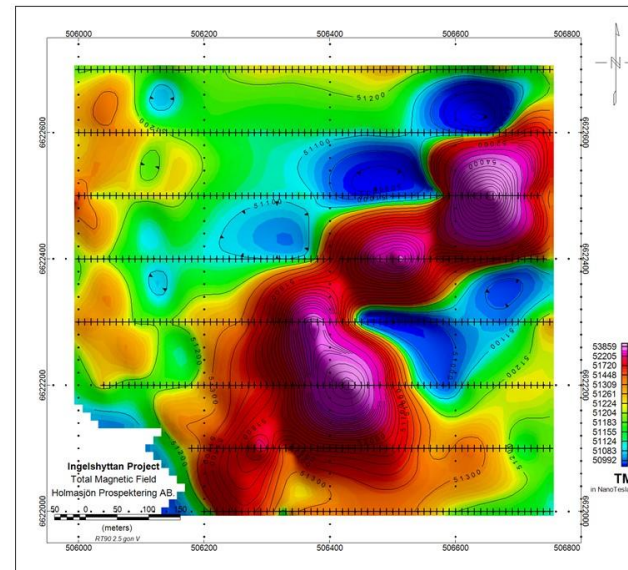
Ingelshyttan

Work conducted

Magnetic survey
VLF survey

Future works

I.P. survey
Initial drilling program



Uvberget

Overview

Very small mines within the area
SGU rock samples with 15,3% zinc and
0,52% of copper



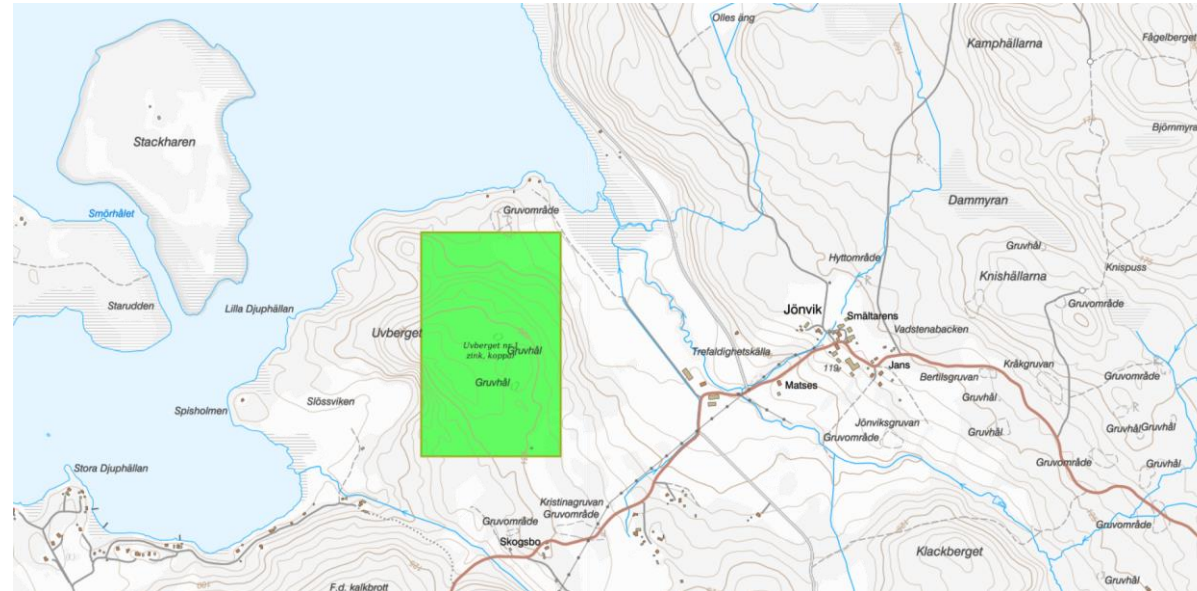
Uvberget

Work conducted

Magnetic survey
VLF survey

Future works

I.P. survey

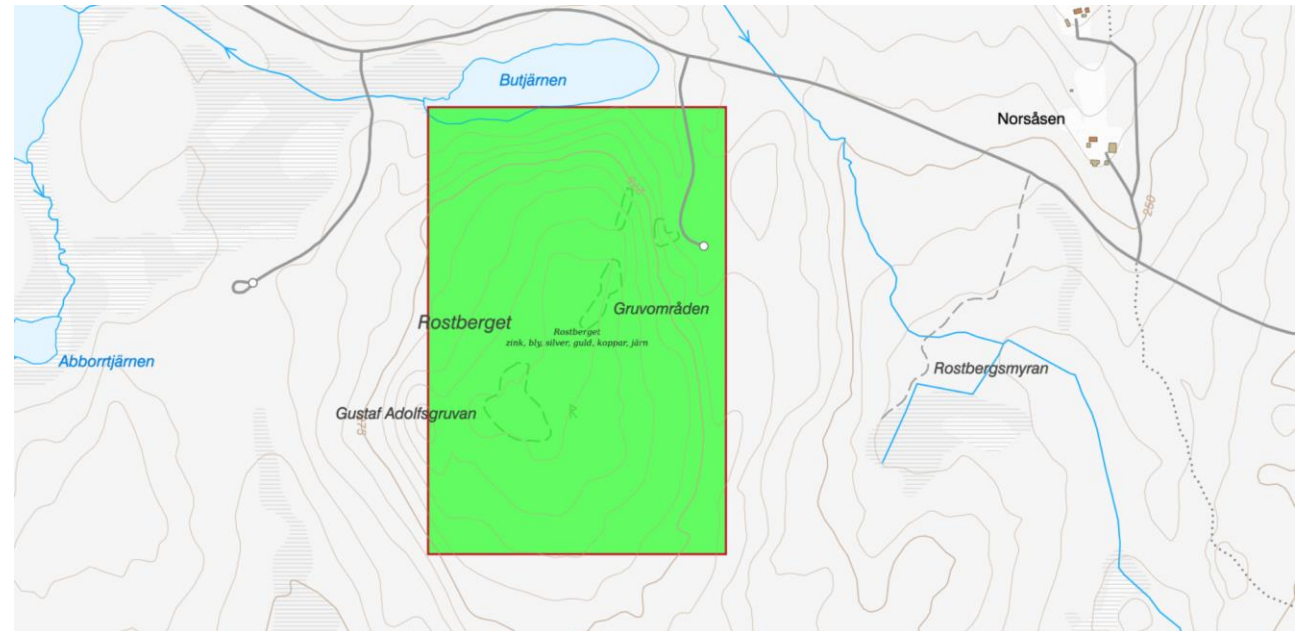


Rostberget

Overview

Mines from the 1890s

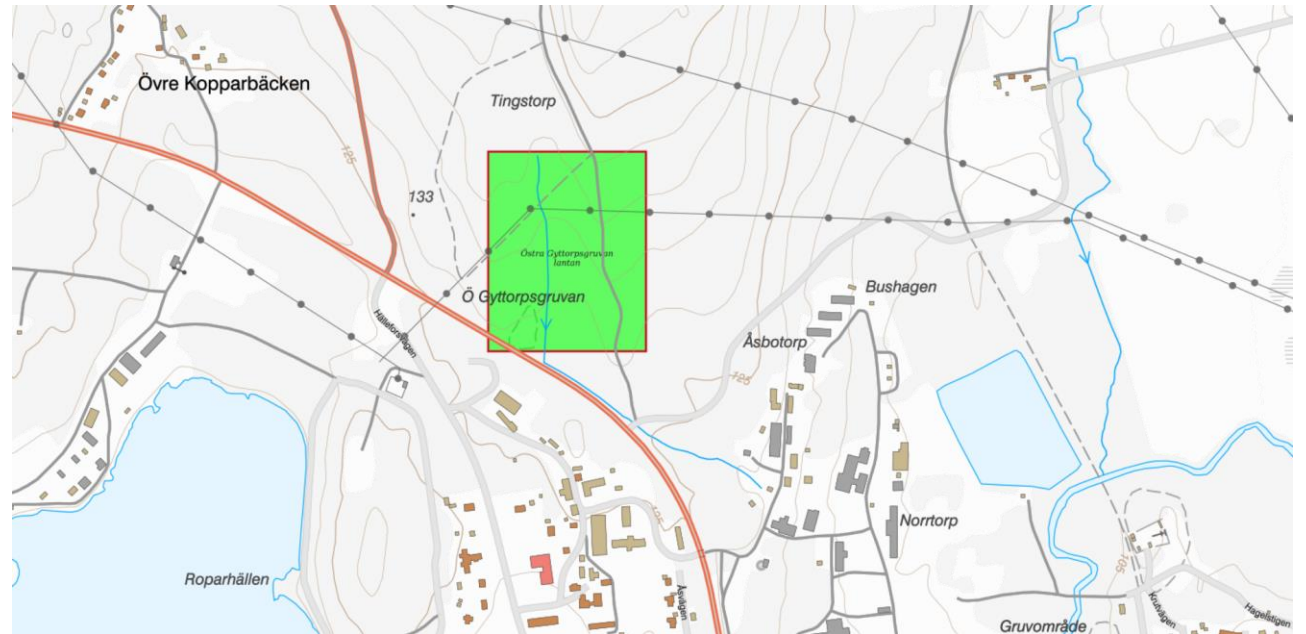
1,26 ppm gold, 205 ppm silver, 0,43%
copper, 4,06% lead and 7,04% zinc



Östra Gyttorpsgruvorna

Overview

Historic iron mine
SGU rocksamples with 1%+ neodymium,
1%+ cerium and 1%+ lanthanum



Services

We perform the following services in house

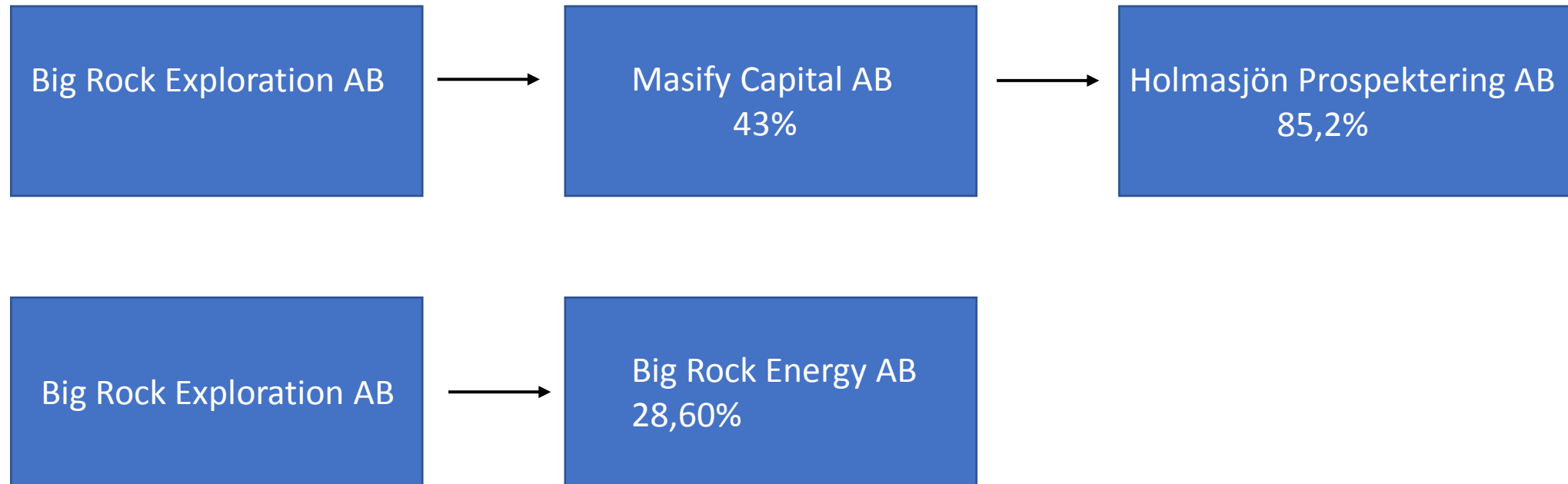
Magnetic survey

VLF survey

I.P. survey

Owners

Name	Share of the company	Board member	Role
Ulrich Andersson	67,18%	Yes	Chairman of the Board
Bengt Turesson	21,87%	No	Geophysicist
Carl-Adam Andersson	4,37%	Yes	Office and fieldworks
Alexander Andersson	2,18%	Yes	CEO
Other	4,40%		



Masify Capital AB

Masify Capital AB is a investment company that is a longterm and engaged owner in small and mid size listed and non listed companies.



Holmasjön Prospektering AB

Exploration permits

Granted:

Holmasjön	Copper, nickel, cobalt, gold, titanium
Kleva	Nickel, copper, gold, titanium, cobalt
Kallmora	REE, iron, copper, lead, zinc
Kallmorbergsfältet	REE, iron, copper, lead, zinc

Applied for:

Kallmora Väst	REE, iron, copper, lead, zinc
Långgruvan Norra	REE, iron, copper, lead, zinc

Holmasjön and Kleva

Overview

Three large anomalies

Six recommended drill sites

Rock samples 0,56% copper, 1,9% titanium and 0,23 ppm gold

Kleva mine 0,75% copper 2% nickel and 0,2% cobalt



Geological mapping in progress



Sulphides ex. copper in rock sample

Holmasjön and Kleva

Work conducted

Geologic mapping

Magnetic survey

Sent rock samples for analysis

Electric I.P. survey on Holmasjön



Electric I.P. survey in progress

Future works

I.P. survey on Kleva

Initial drilling program of six holes

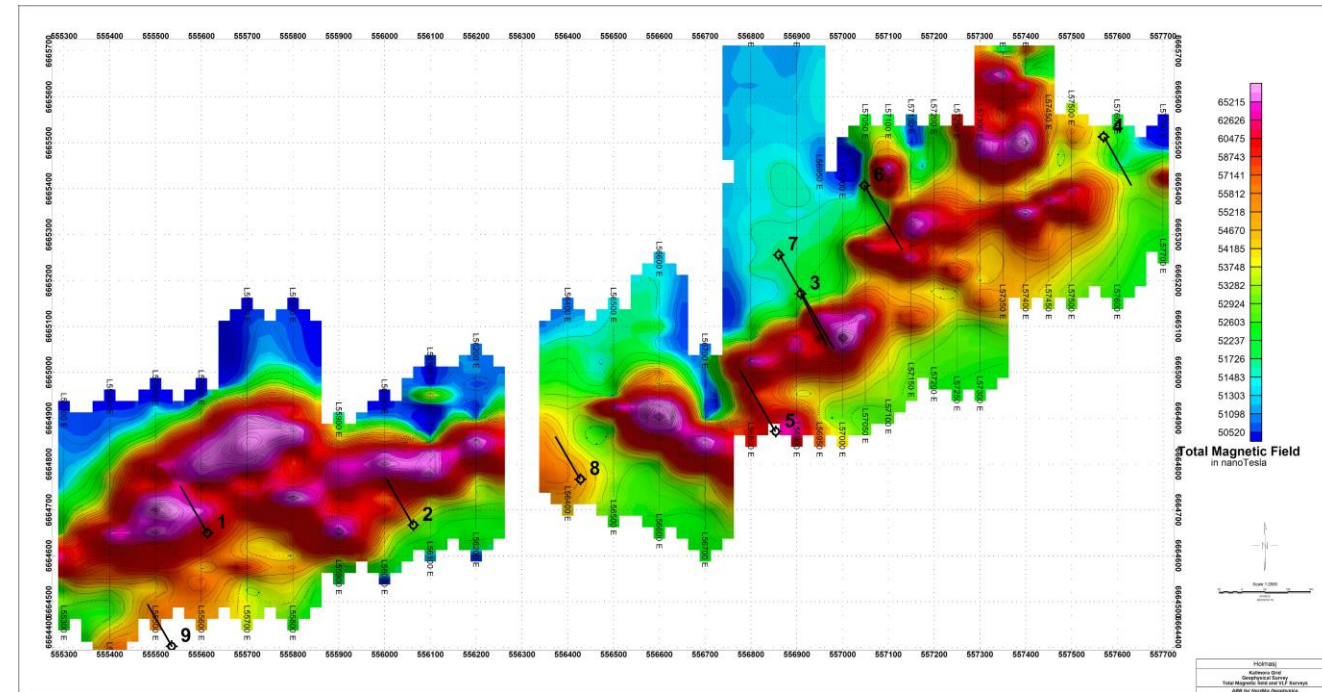


Kleva mine from the top of the mountain

Kallmora

Overview

Copper, lead, zinc, iron and REE
Over 20 abandoned mines, 1950s and earlier
2 large magnetic anomalies
VLF and I.P. anomalies coincide with the western
magnetic anomaly and several more in the eastern
half.



Kallmora

Work conducted

Magnetic survey
VLF survey
I.P. survey
Drilled 2 holes



Future works

Drill 4 holes on western anomaly



Kallmorbergsfältet

Overview

Up to 35% iron, 9,66% copper, 45,2% lead, 16% zinc

Tonnage 7 Mton (Sweden Geological Survey SGU)

Mining from 1836 to 1976

Same air magnetic anomaly as Kallmora (SGU)

Potential for rare earth elements



Rock sample, location unknown



Kallmora Väst

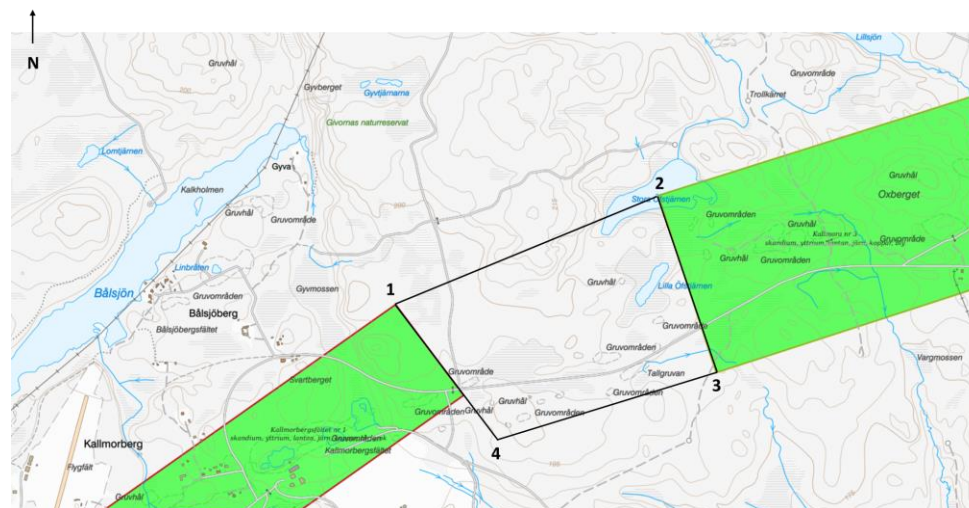
Overview

Several old iron mines

Some iron mines with REE

Close the gap between Kallmora and Kallmorbergsfältet

Magnetic and electric anomalies continues to Kallmora Väst



Långgruvan Norra

Overview

Applied for in October after I.P. survey on eastern part of Kallmora

Strong I.P. anomaly from Långgruvan in the north-eastern part of Kallmora and continues north in to this area



Big Rock Energy AB

Exploration permits

Applied for:

Kölen

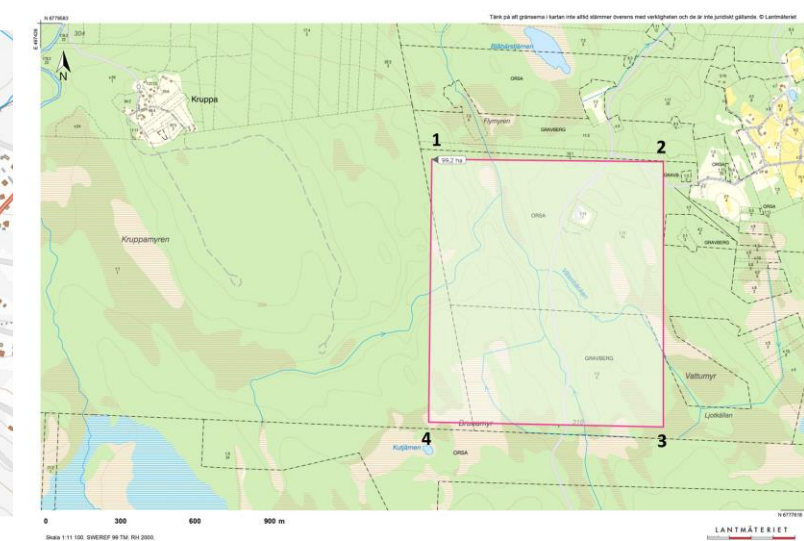
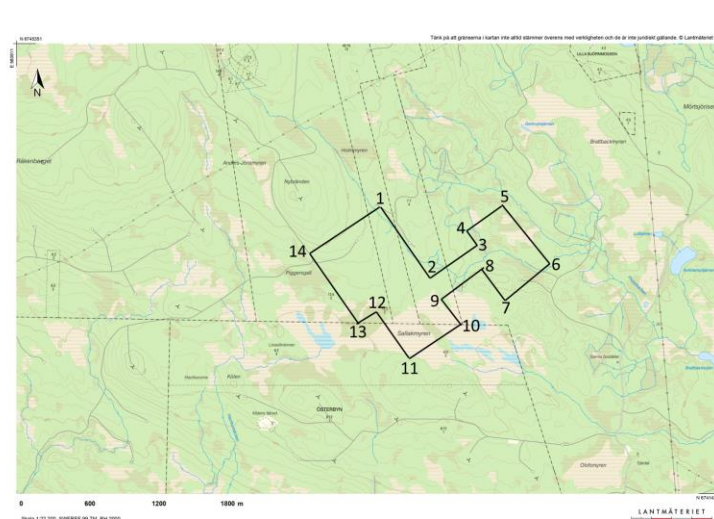
Iron and copper

Vintjärn

Iron and copper

Gravberg

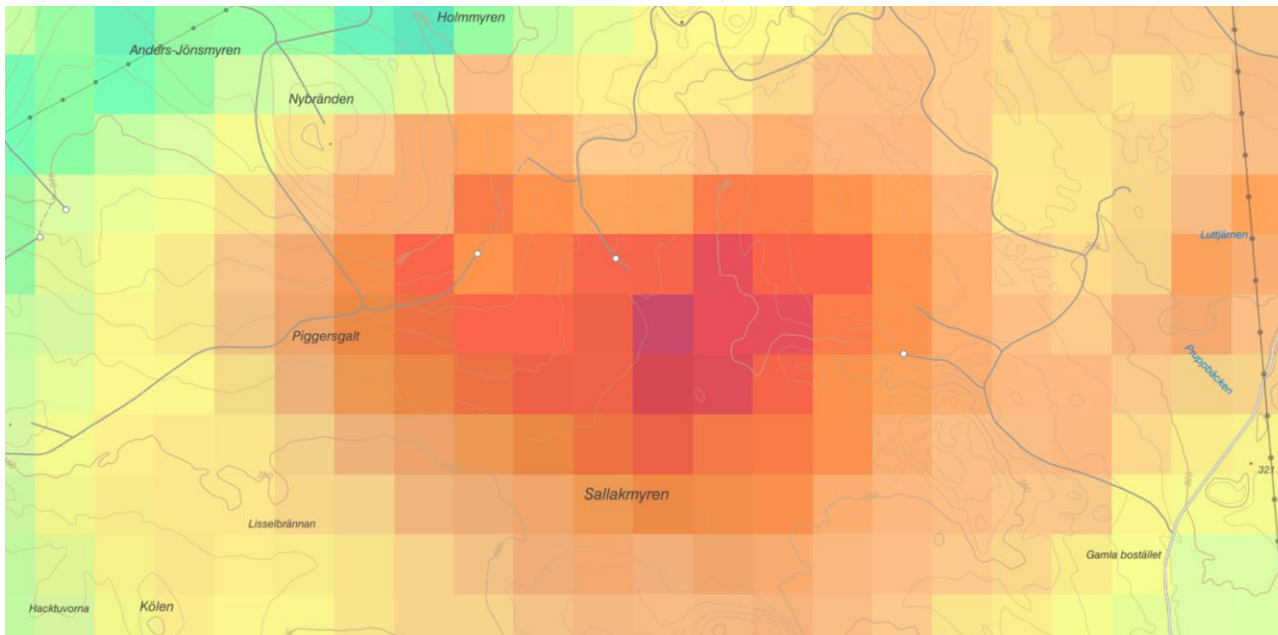
Hydrogen and helium



Kölen

Overview

70 Mton of 40% iron according to SGU



Kölen Air-magnetic map SGU

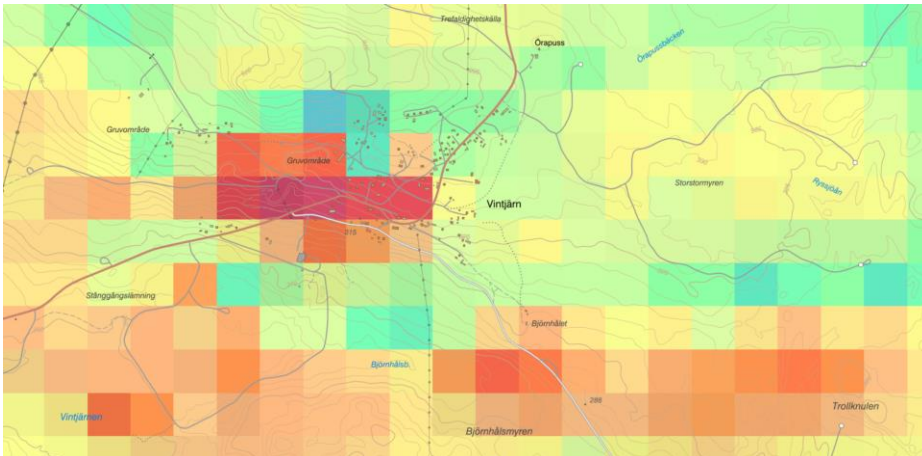
Vintjärn

Overview

Mining activity from 1834 to 1978

Open pit mines with more beneath
35% iron

According to old miners the iron in Vintjärn may lead to Kölen



Vintjärn Air-magnetic map SGU

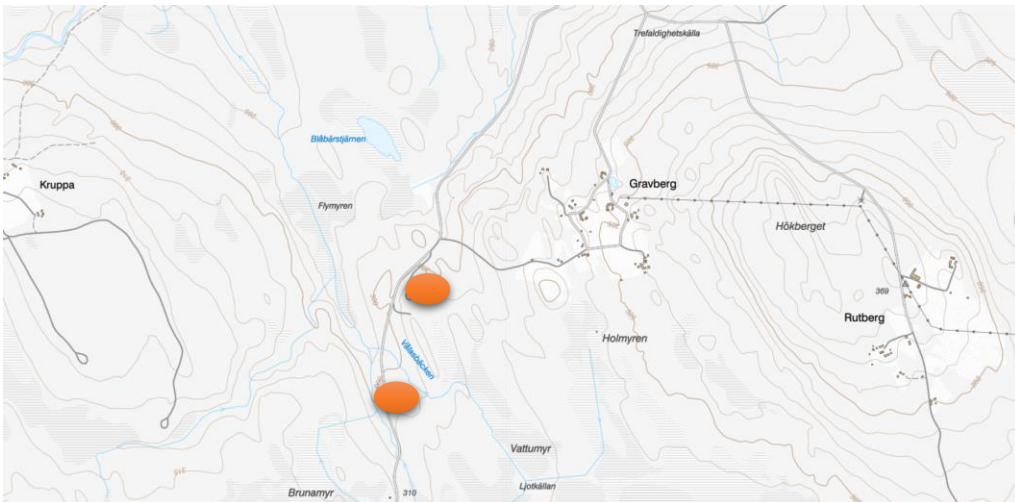
Gravberg

Overview

2 deep holes were drilled by Dala Djupgas, the deepest to 6 337 m

Contains hydrogen gas, helium and argon

Intend to use plant that extract hydrogen and keep fossil gases in the ground



Gravberg drill-core map SGU