

Big Rock Exploration AB

Corporate Presentation february 2023



Table of Contents

3-6 About the Company

7-15 Projects

16-20 Rare Earth Metals

21-22 Cooperation

23 Summary

24 Contact

History

- Established year 2013
- Based in Jonkoping, Sweden
- Areas of activity: Exploration of minerals (base metals/earth metals, oil, gas and hydrogen).
Management of securities
- The company has a combined experience of over 40 years in the industry.

Management



Ulrich Andersson
Chairman Of The Board/Founder

Born in year 1966, Ulrich is a well-known entrepreneur in the raw material business. He has been involved in leading several companies to the stock exchange with great success.



Alexander Andersson
CEO/Co-Founder

A young entrepreneur born year 1998, Alexander has university education in economy and experience working out on permits both in the mineral sector and the oil&gas sector. Already CEO of "Big Rock Exploration AB



Carl-Adam Andersson
Board Member/Co-Founder

Born in year 1992, Carl-Adam has a degree in international economics from Australia. Co/Founder for several companies and CEO of "Holmasjön Prospektering AB"

Purpose

Exploring areas of interest with geological surveys.

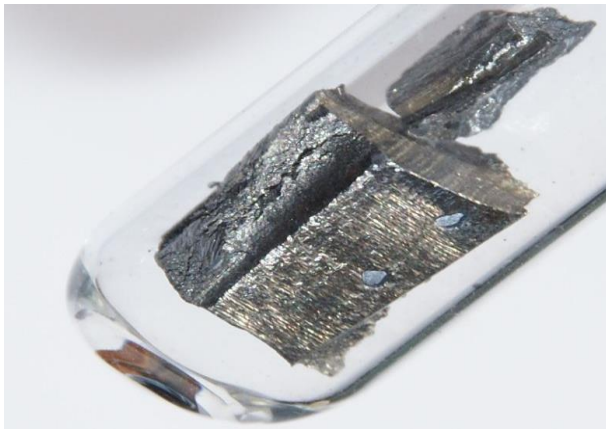
Contribute minerals for the green transition.

Extract REE minerals and base minerals with good environmental conditions.

Reduce dependence on critical metals imports

Main areas

Rare Earth Metals (REE)



- 17 different REE metals
- Several found in Sweden
- Most extracted in China
- Used for batteries, solar cells, components etc.

Copper



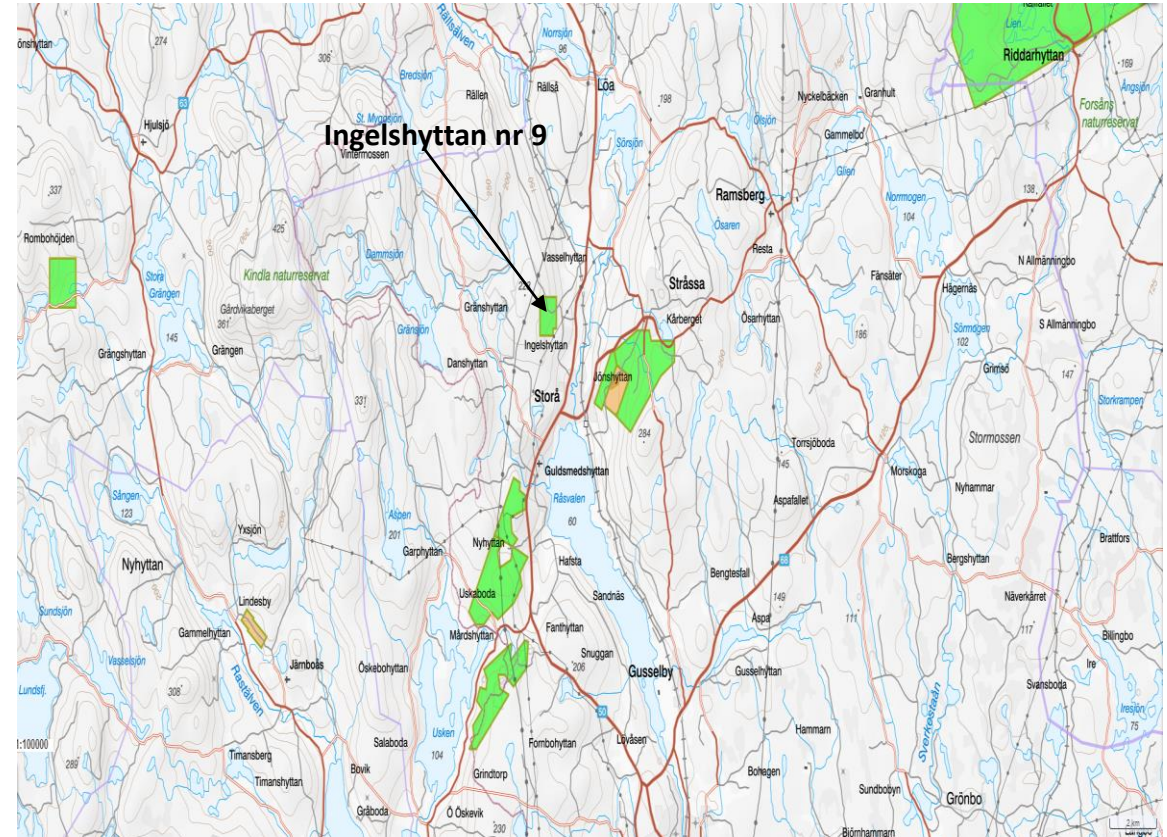
- Most extracted i Latin America
- Long history of copper in the world
- Used mostly for conducting electricity

Zinc



- 13 mil tons used per year
- Used for car and electricity industry
- 50% of all zinc are used in China

Ingelshyttan nr 9



About the project

Ingelshyttan nr 9" is an exploration permit of 79.5 hectares located in Lindesberg municipality in Bergslagen

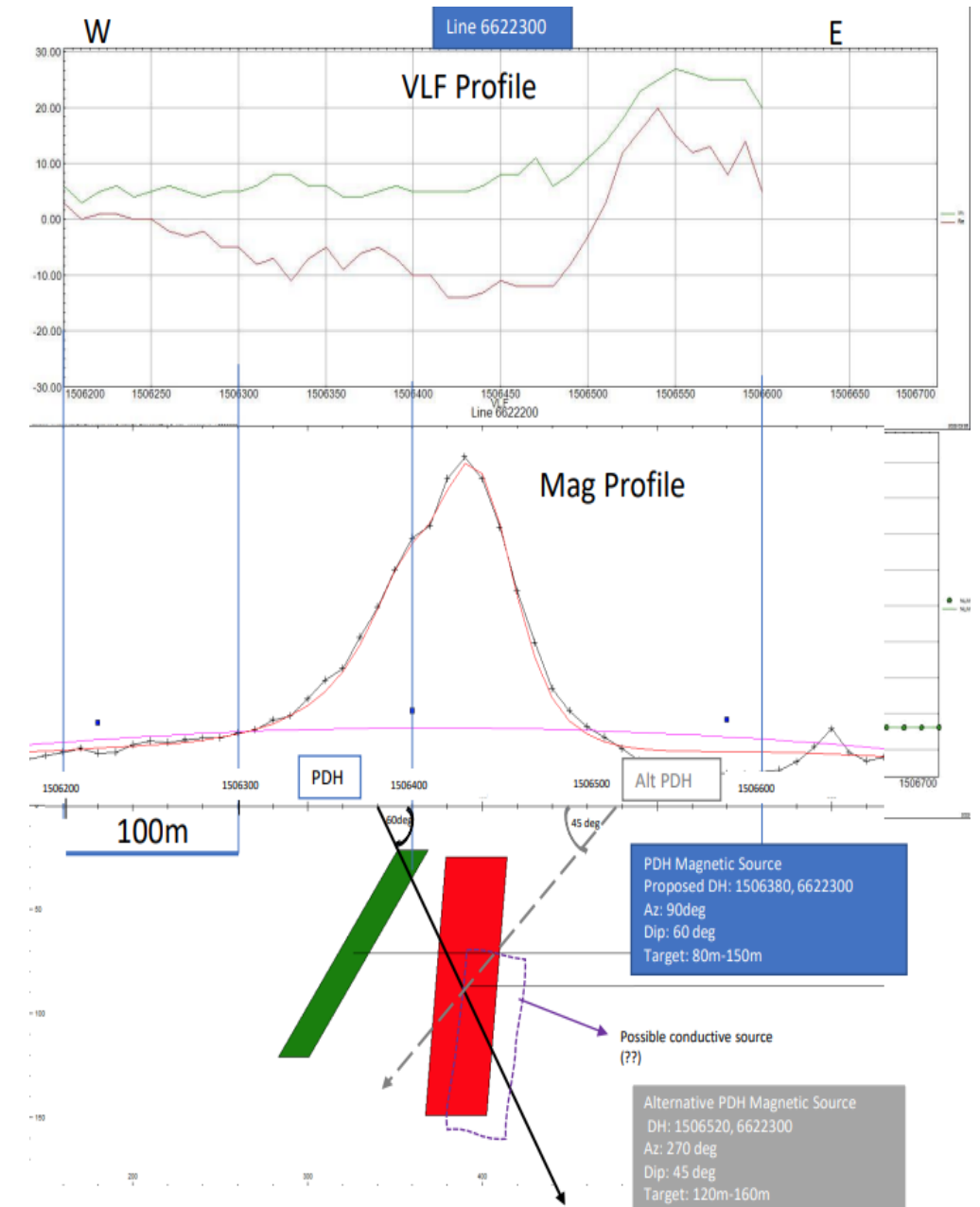
According to SGU, it has a content of 9.2% copper.

There are several closed mines in the area, the most recent mine was closed in the 1950s.

There are a number of slag heaps on the permit and from some slag heaps from the old mines there are rock samples with very high levels of sulphides.

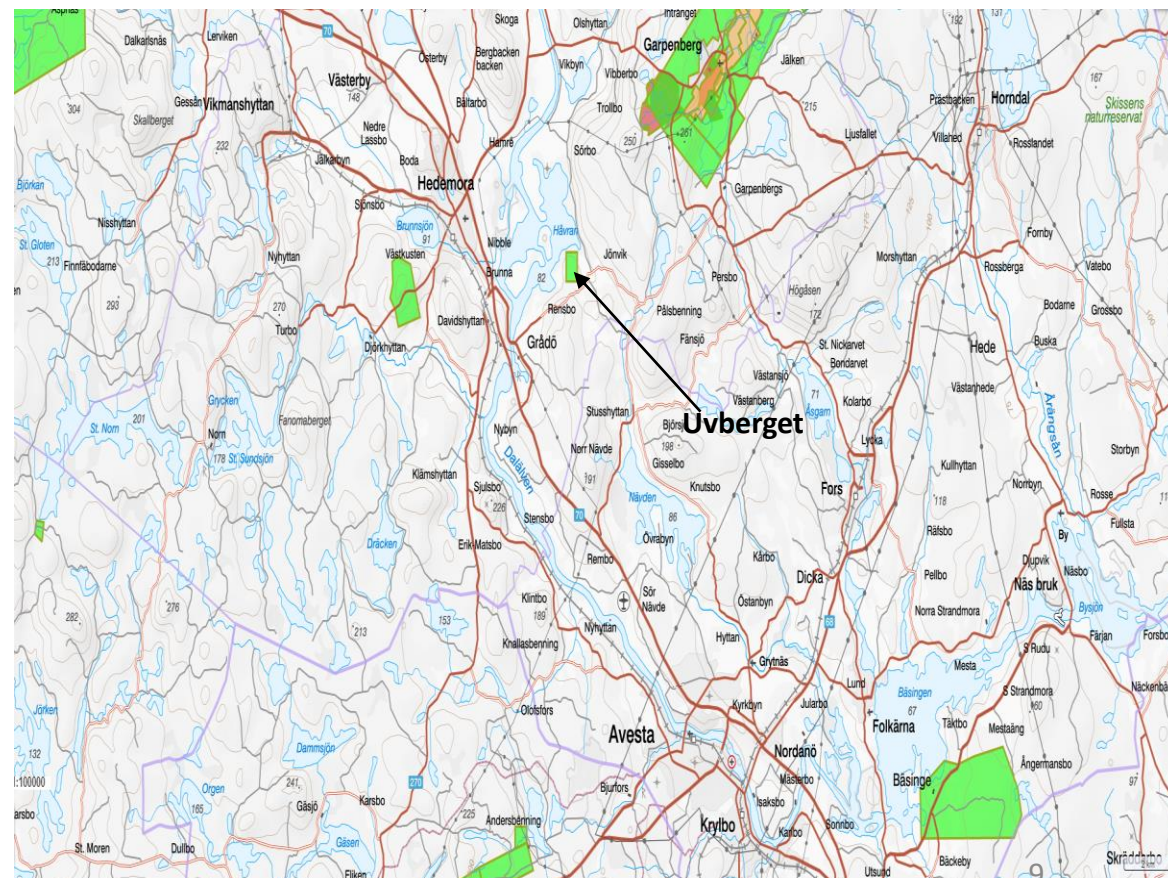
The area is only 2.5 kilometers from the Lovisa mine.

Have recommended a core drilling of 90 meters within the exploration permit.



Picture shows the recommended core drilling

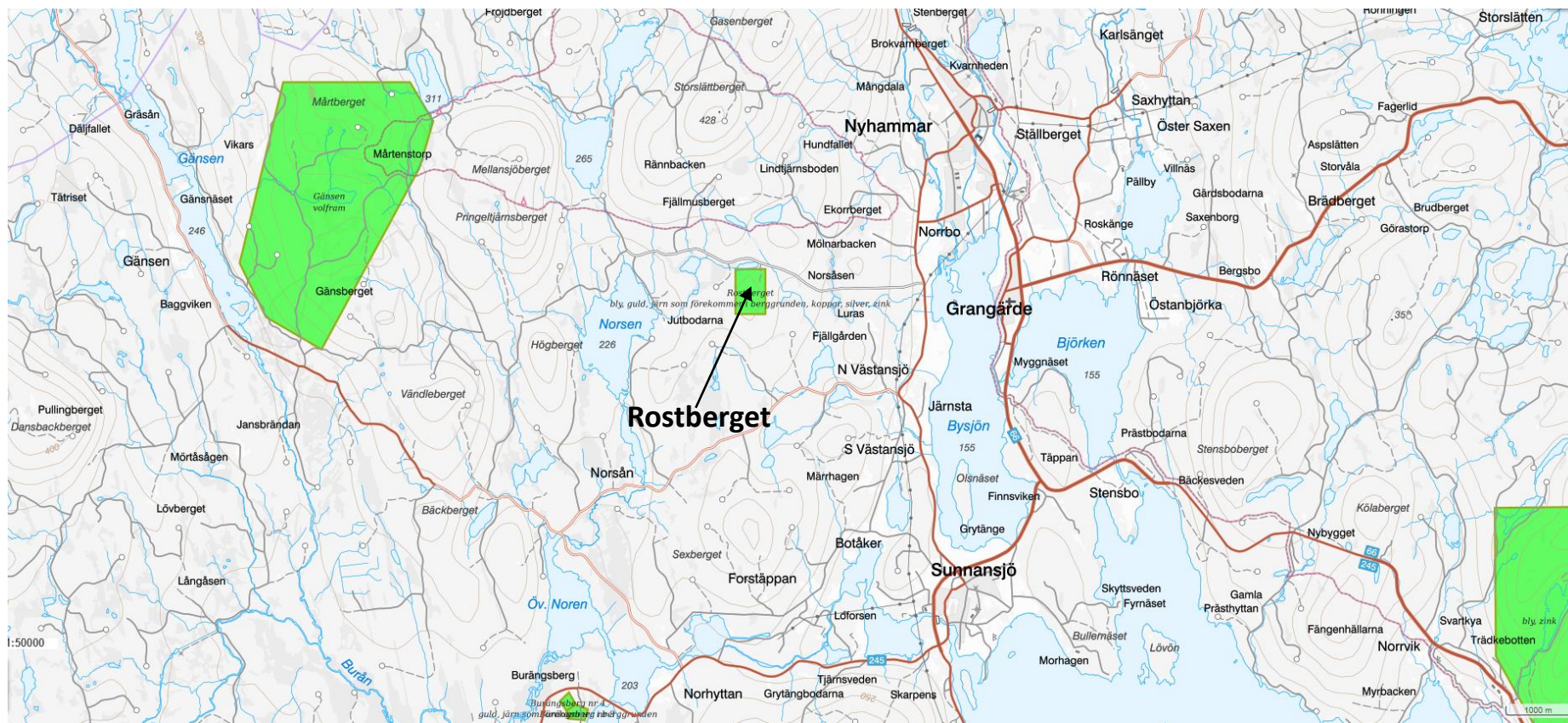
Uvberget



About the project

- "Uvberget" is an exploration permit for 40 hectares in Hedemora municipality, Dalarna.
- In 2017, SGU (Swedish Geological Survey) took rock samples in this area from slag heaps. The samples gave results of 13% zinc and 0.5% copper.
- The company intends to carry out geological surveys in the area to investigate the extent of the anomaly and, after that, plan drilling targets to further ensure the area's high potential.

Rostberget



About the project

- "Rostberget "is located in Ludvika municipality, Dalarna.
- In this area, rock samples from slag heaps have been carried out and show levels of the following:
Silver 205 ppm, gold 1.26 ppm, copper 0.43%, iron 28.3%, lead 4.06%, zinc 7.04%. (source SGU)

Work done on permit

- Within the permit Rostberget, the company has encountered an electrical VLF anomaly at the exploration permit's largest mining area. The VLF anomaly is about 150 meters long in the north-south direction and about 40 meters wide in the east-west direction.
- Additional geophysical surveys are planned on the exploration permit.

Repabergsgruvorna

- The exploration permit "Repabergsgruvorna" is located northwest of Nora in Örebro County.
- There are several old iron mines in the area. In the slag heaps from these mines, SGU has at two places found the REE metals lanthanum (La), cerium (Ce) and neodymium (Nd).
- The highest levels from these rock samples are 0.91% lanthanum, over 1% cerium and 0.68% neodymium.
- Big Rock Exploration AB intends to perform a magnetic surveys and additional rock samples for analysis to investigate the extent of these REE metals.

Nybergsfältet

- "Nybergsfältet" is located in Nora municipality, Örebro county.
- Within the exploration permit applied for, there are several disused iron and copper mines where the last mine closed in 1968.
- Previous holders of the exploration permit have drilled three holes totaling 713 meters. In these boreholes, several zones with copper 1.95%, and iron 65.49% and a zone with gold of 2.14 ppm were found according to SGU.
- The Company intends to perform magnetic surveys as well as electrical surveys to investigate the extent of minerals in the area.

Grecksåsar

- The exploration permit for copper, iron, zinc, lead and silver is located in Nora municipality, Örebro county.
- Within the applied area "Grecksåsar" there are two old mines where iron and lead have been mined.
- In 2005–2006, a hole of 202 meters was drilled in the area and concentrations of 2.83% copper were found.
- The company intends to perform magnetic and electrical surveys in the area to investigate the extent of minerals in the area.

A stylized globe with a network overlay. The globe is rendered in a golden-yellow color with a textured, almost pixelated surface. It is surrounded by a complex network of thin, light-blue lines and small, semi-transparent blue dots, suggesting a global network or data flow. The background is a dark, deep blue with a subtle pattern of small, light-blue dots and lines, creating a sense of depth and technology.

Rare earth metals

Uses

Hybrid and electric cars can contain 20–25 pounds¹ of rare earths
(Twice the amount found in standard gasoline cars)

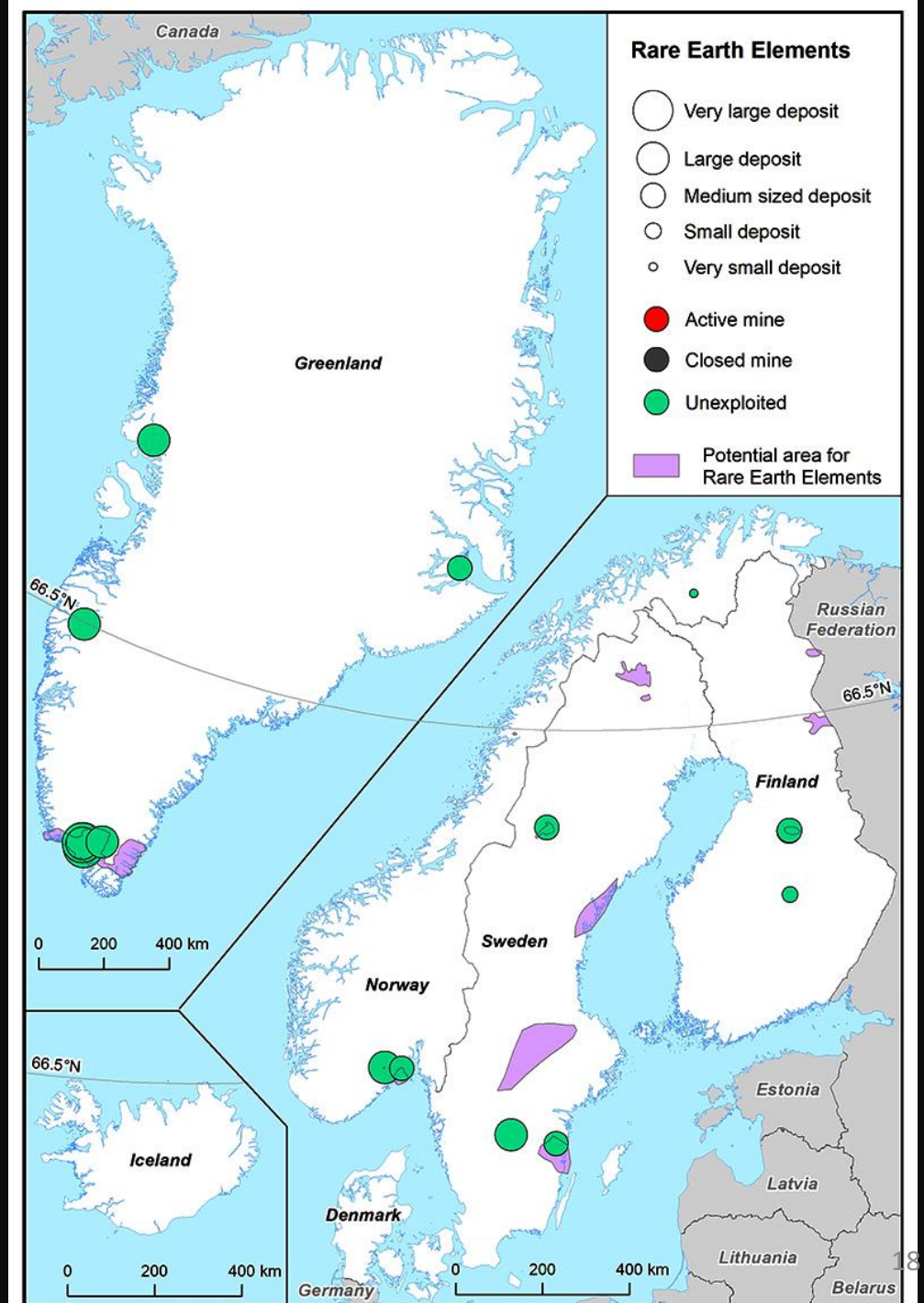


¹Source: "The Race for Rare Metals", Globe and Mail, July 16, 2011

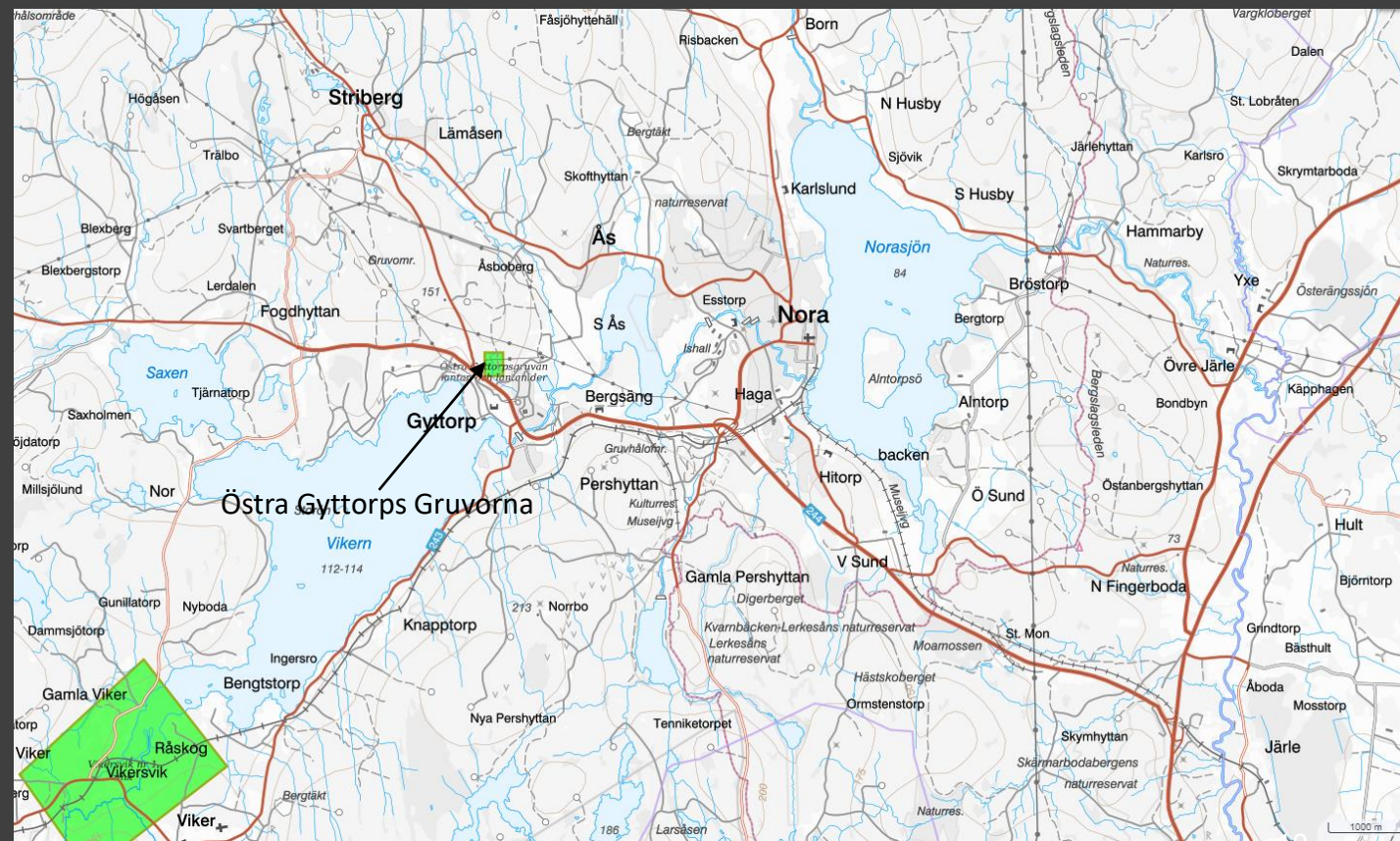
Rare earth metals (LREE and HREE) are used, among other things, for magnets in electric motors and generators, catalysts, batteries, glass and ceramics.

Where

- Globally, China is by far the largest producer with 86 percent of world production, followed by Australia (6 percent) and the United States (2 percent). Within the EU, demand is met with imports from China to 99 percent (LREE) and 98 percent (HREE), respectively. Only 3 percent and 8 percent, respectively, of the need is judged to be met through recycling.
- No production of rare earth metals is currently taking place in Sweden, but mining has previously taken place within the Bastnäs field in Västmanland County and discussions have taken place regarding the opening of a completely new mine at Norra Kärr in northernmost Jönköping County.



Östra Gyttorps Gruvorna



About the project

- "Östra Gyttorps Gruvorna" is located in Nora municipality, Örebro county. This area is particularly interesting as elevated values of rare earth metals have been demonstrated. SGU (Swedish Geological Survey) has carried out rock samples of slag heaps where "ALS Minerals AB" analyzed and confirmed the following 1% lanthanum (La), 1% Cerium (Ce), 1% Neodymium (Nd)
- The company has detected a magnetic anomaly that is 200 meters long (east-west) and an average of 50 meters wide (north-south). Within this anomaly is also the closed "Östra Gyttorpsgruvan" where SGU took five stone samples from the slag heap (see above). Several rock samples will be submitted for analysis and the geophysical surveys to be interpreted for drilling sites.
- **This project runs together with the associated company "Archelon REE AB"**

Cooperation (companies)

Big Rock Energy AB

The company was formed in 2015 as an oil and gas company. The company also has good contacts in the oil and gas market in Europe and North America.

The company evaluates both hydrogen and iron/silicon projects in Sweden.

Holmasjön Prospektering AB

The company was formed in 2014 with the business idea of identifying and developing mineral resources through its own exploration. The company focuses its operations on base, precious metal deposits and rare earth metals used in computers, cell phones, electric cars and other advanced electronics.

The company is a going concern and have drilled several core bores with good results.

Archelon REE AB

Archelon REE AB was formed by the parent company "Archelon Natural Resources AB (publ)" in 2020 with a focus on rare earth metals. (REE)

The company is active in exploration of areas of high interest for REE minerals in Sweden.

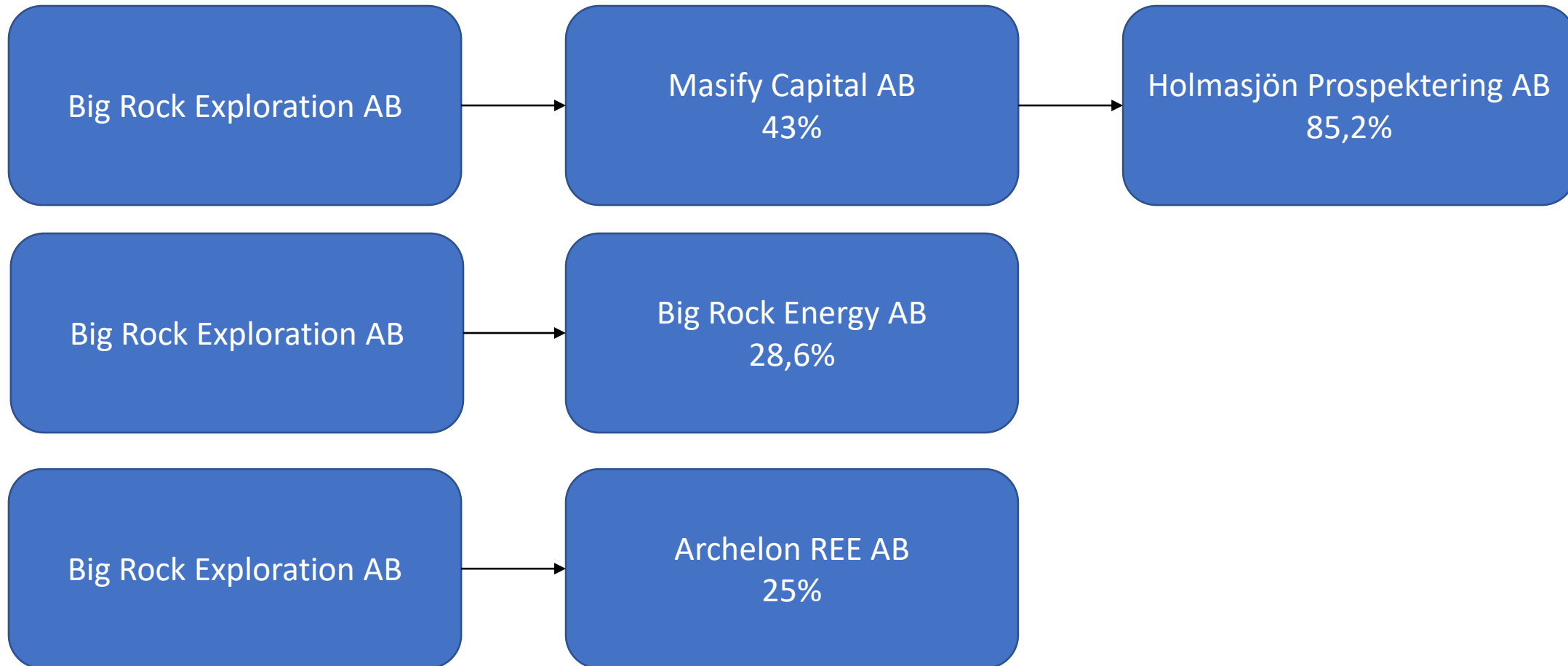
Masify Capital AB

Masify is an investment company that is a long-term committed owner of small and medium-sized listed and unlisted companies. The company was founded in 2001 with the company Swede Resources AB. At the Annual General Meeting in the summer of 2017, the owners decided to change company and operations.

The company has about 2,500 shareholders.

- Big Rock Exploration AB:s ambition is to develop new projects regarding raw materials and energy.
- Therefore, is the Company Always open to discuss new projects with new partners.

Cooperation (ownership)





Summary

- Family business since 2013
- Base/Ree metals and energy
- Six granted exploration permits.
- Ree metals are critical for the future
- Collaborates with several companies



Contact

CEO, Alexander Andersson

Phone: +46 70-695 84 06

E-mail: alexander@bigrockexploration.se

Chairman Of The Board, Ulrich Andersson

Phone: +46 70-376 05 15

E-mail: ulrich@ulrich-co.se

Address:

Slottsgatan 14

553 22 Jönköping